

# Laplanda

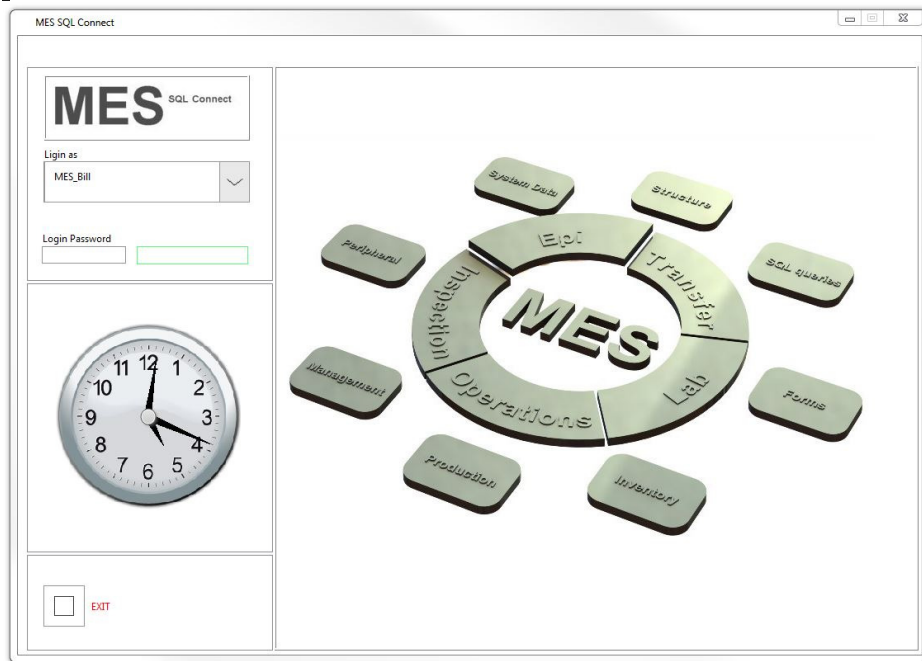
[www.laplanda.com](http://www.laplanda.com)



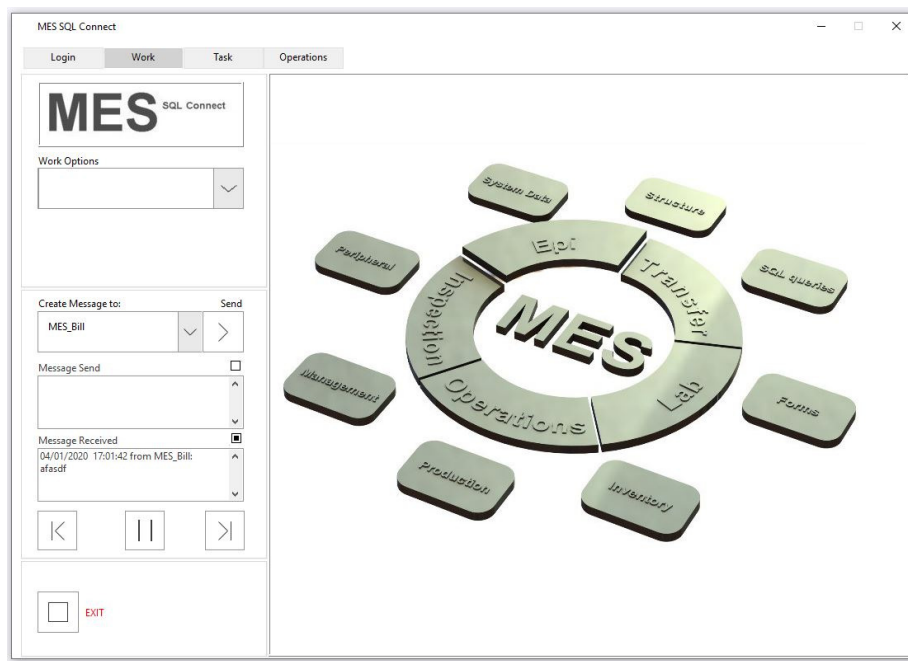
GUI and Guide of Manufacturing Execution System (MES) with SQL (Structured Query Language) BD (Database) Connectivity

Adds-On

Laplanda Business Management software

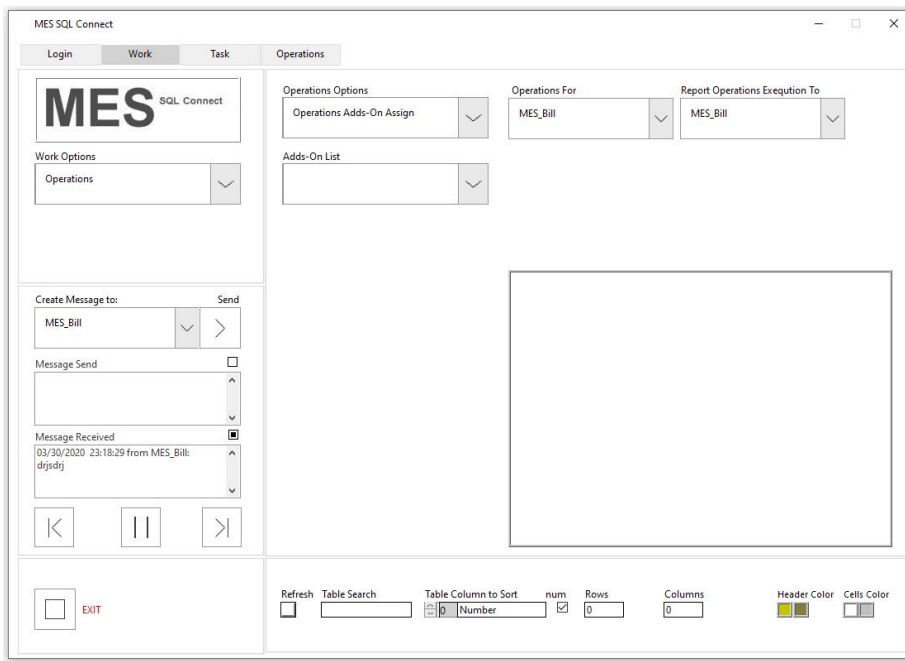


Welcome Tab



## Work: Working Options

- Structure
- DB Query
  - Forms
  - Inventory
  - Production
  - Manage
  - Operations
  - System Data
  - SOP



The image shows a screenshot of the 'MES SQL Connect' software interface. The window has a title bar with standard minimize, maximize, and close buttons. Below the title bar is a tabbed interface with four tabs: 'Login', 'Work', 'Task', and 'Operations'. The 'Operations' tab is currently selected.

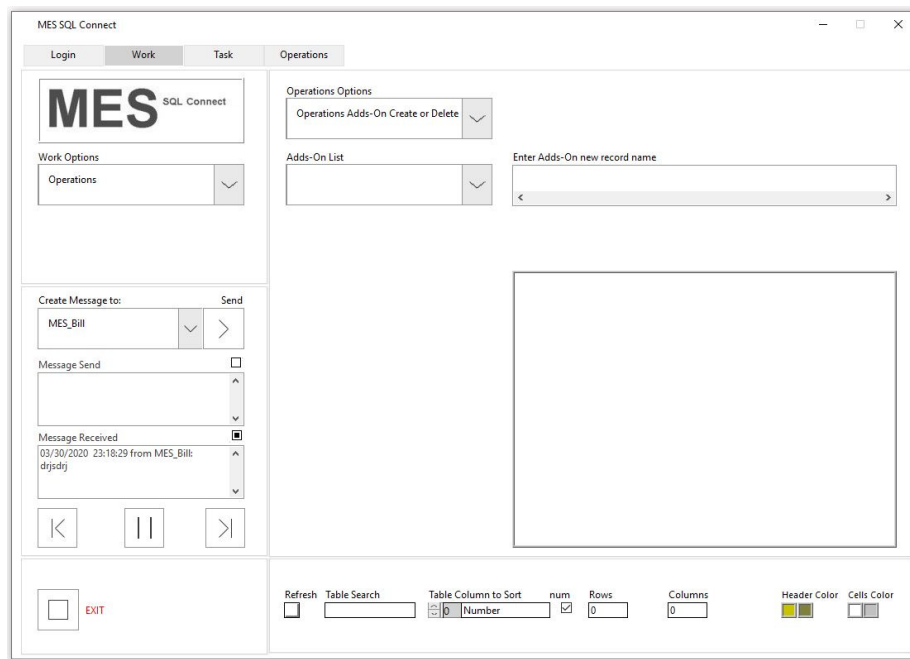
On the left side of the 'Operations' tab, there is a vertical panel. At the top, it says 'MES SQL Connect'. Below that is a 'Work Options' section with a dropdown menu set to 'Operations'. Further down is a 'Create Message to:' section with a dropdown set to 'MES\_Bill' and a 'Send' button. Below that is a 'Message Send' section with a text area and a 'Message Received' section showing a timestamp '03/30/2020 23:18:29 from MES\_Bill: drjsdj'. At the bottom of this panel are three navigation buttons: '<', '||', and '>'. At the very bottom left is an 'EXIT' button.

The main area of the 'Operations' tab contains several sections. At the top, there are three dropdown menus: 'Operations Options' (set to 'Operations Adds-On Assign'), 'Operations For' (set to 'MES\_Bill'), and 'Report Operations Execution To' (set to 'MES\_Bill'). Below these is an 'Adds-On List' section with a dropdown menu. The central part of the main area is a large, empty rectangular box. At the bottom of the window is a status bar with various controls: 'Refresh' (checkbox), 'Table Search' (text input), 'Table Column to Sort' (dropdown set to 'Number'), 'num' (checkbox), 'Rows' (input set to '0'), 'Columns' (input set to '0'), 'Header Color' (color swatch), and 'Cells Color' (color swatch).

## Work: Working Options: Operations

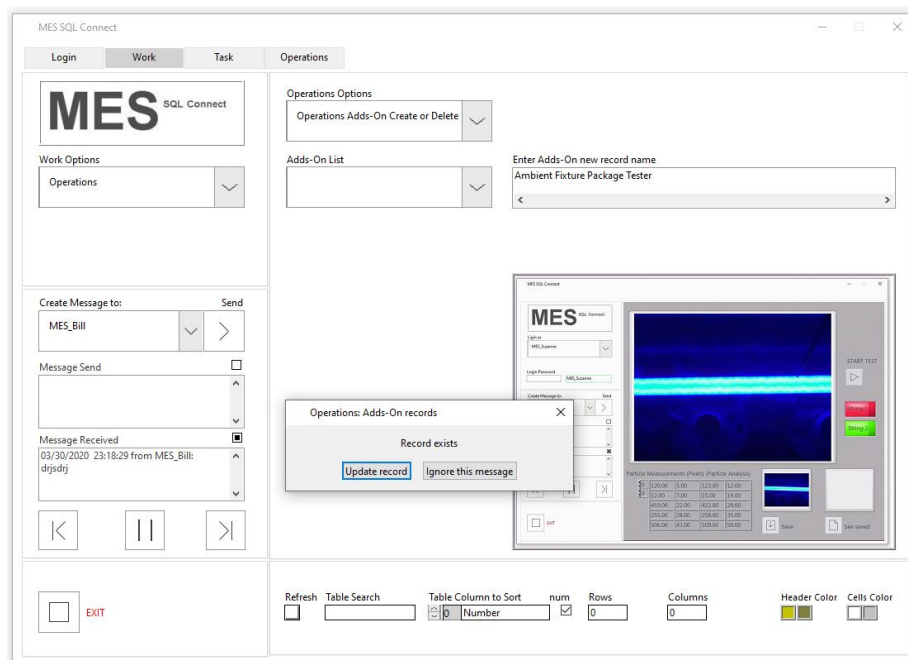
Operations Options:

- Operations Create
- Operations Create Options
- Operations Adds-On Assign
- Operations Adds-On Create or Delete



## Work: Working Options: Operations Operations Options: Operations Adds-On Create or Delete

This function allows to Create or Delete the Adds-On application connection upon the Operator operation execution. "Adds-On List" is forming by creating the Adds-On name and the Image (avatar).



## Work: Working Options: Operations Operations Options: Operations Adds-On Create or Delete

“Enter Adds-On new record name”.

This Name will be a search criteria for the following functions.

“Ambient Fixture Package Tester” Adds-On will be created.

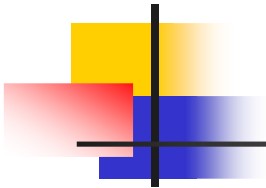
DIALOG” Operations: Adds-On record”: Record exists

This record already exists in the Database.

OPTIONS: “Update record”; “Ignore this message”

“Update record” function.

Continue...



MES SQL Connect

Login Work Task Operations

**MES** SQL Connect

Work Options  
Operations

Create Message to: MES\_Bill Send

Message Send

Message Received  
03/30/2020 23:18:29 from MES\_Bill:  
djsdjd

Operations Options  
Operations Adds-On Create or Delete

Browse for path to image to assign. Adds-On image is an identifier and must be placed

Adds-On List

Enter Adds-On new record name  
Ambient Fixture Package Tester

MES SQL Connect

Operations Options  
Operations Adds-On Create or Delete

Browse for path to image to assign. Adds-On image is an identifier and must be placed

Adds-On List

Enter Adds-On new record name  
Ambient Fixture Package Tester

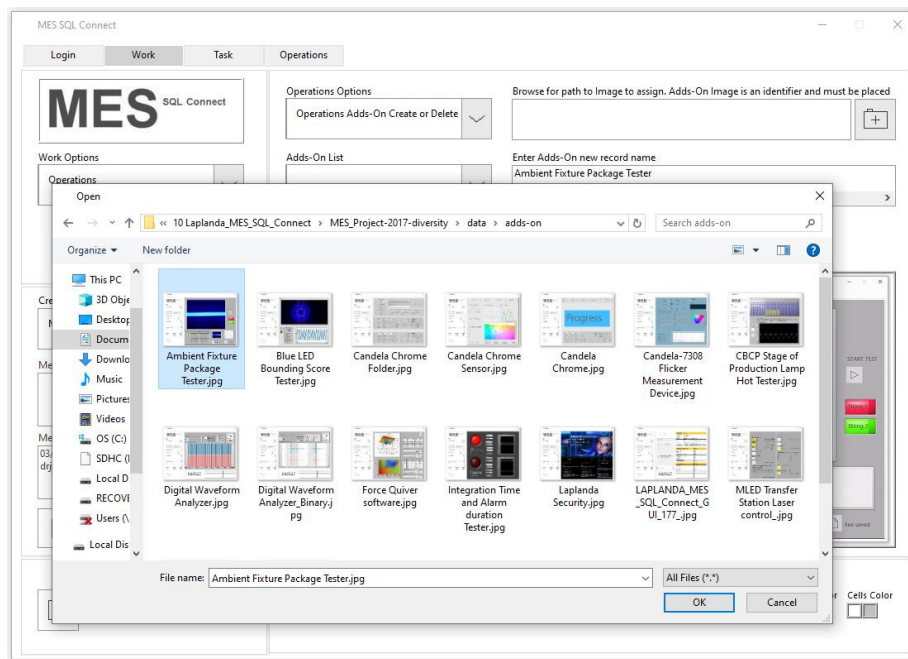
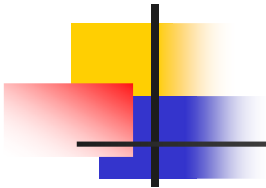
Refresh Table Search Table Column to Sort num Rows Columns Header Color Cells Color

EXIT

Work: Working Options: Operations  
Operations Options: Operations Adds-On  
Create or Delete

“Browse for path to image to assign. Adds-On image is an identifier and must be placed”

Continue...

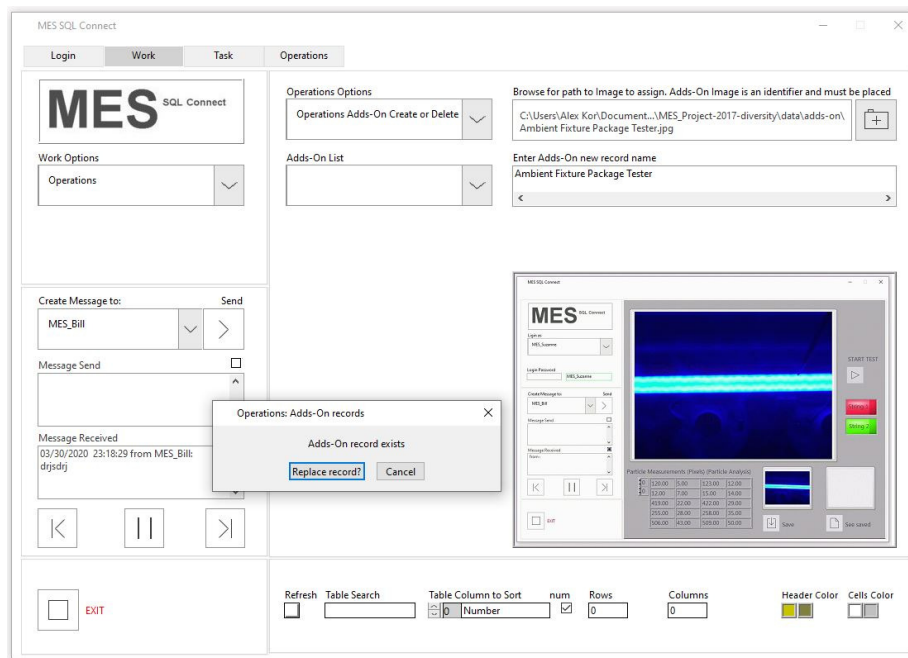
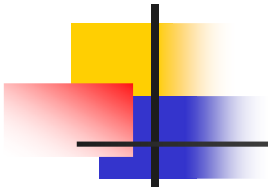


Work: Working Options: Operations  
Operations Options: Operations Adds-On  
Create or Delete

“Browse for path to Image to assign. Adds-On Image is an identifier and must be placed”.  
Browse for avatar Image.

Continue...



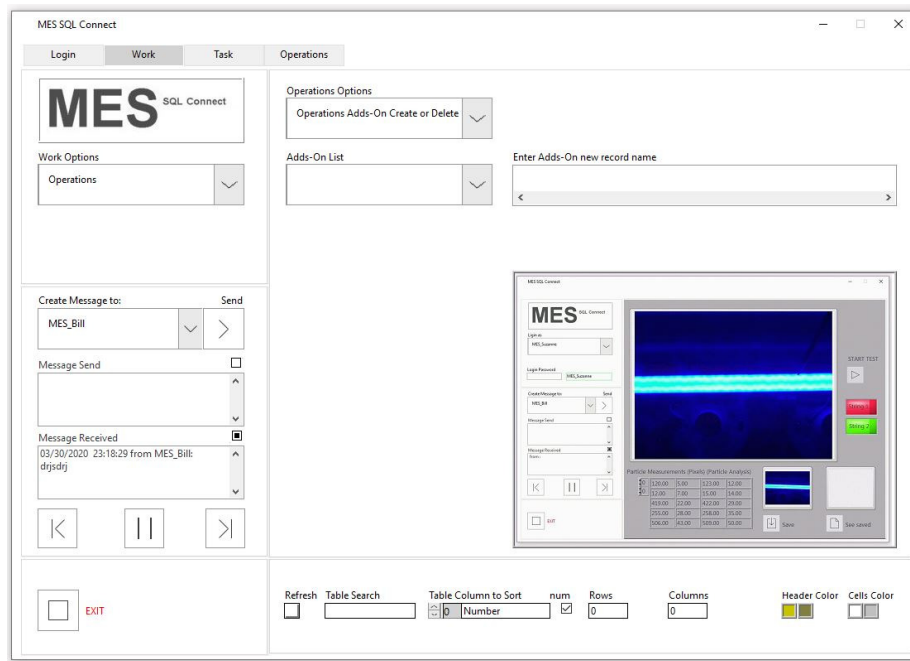


Work: Working Options: Operations  
Operations Options: Operations Adds-On  
Create or Delete

DIALOG: "Operations: Adds-On record": "Adds-On record exists".

OPTIONS: "Replace record?"; "Cancel".  
Replace record.

Continue...



## Work: Working Options: Operations Operations Options: Operations Adds-On Create or Delete

Record replaced. Operations Adds-On “Create” finished.  
The order number, Adds-On name and avatar Image is saved  
in the Database Table “AddsOn”  
NOTE: The “AddsOn” Table is creating automatically in the  
instructed Database.

Continue...

MES SQL Connect

Login Work Task Operations

**MES** SQL Connect

Work Options  
Operations

Create Message to: MES\_Bill Send

Message Send

Message Received  
05/30/2020 23:18:29 from MES\_Bill: djsjdj

Operations Options  
Operations Adds-On Assign

Adds-On List  
Ambient Fixture Package Tester

Monitor Resolution  
1920 x 1200

Database Information and Image size

Column	Value
DocNumber	15
Assigned By	
Assigned To	
Report To	
Adds-On Name	Ambient Fixture Package
Execution Startup	
Screen Resolution	
Pass To Executable	
Note ID	
Image Width	1111
Image Height	802
Image Depth	8
Date Time ID	05/13/2020 14:45:46
Accepted By	MES_Bill
Today's Day Time	05/13/2020 14:46:55
Will be Accepted By	MES_Bill

Operations For  
MES\_Bill

Report Operations Execution To  
MES\_Bill

Browse for path to Execution

Execution Startup

NoteID

MES SQL Connect

Log On  
MES\_Bill

Code Message  
MES\_Bill

Message Send

Message Received

START TEST

STOP

PAUSE

RESUME

Particle Measurements (Photo Particle Analysis)

Table Column to Sort  
num

Rows  
0

Columns  
0

Header Color

Cells Color

EXIT

## Work: Working Options: Operations Operations Options: Operations Adds-On Assign

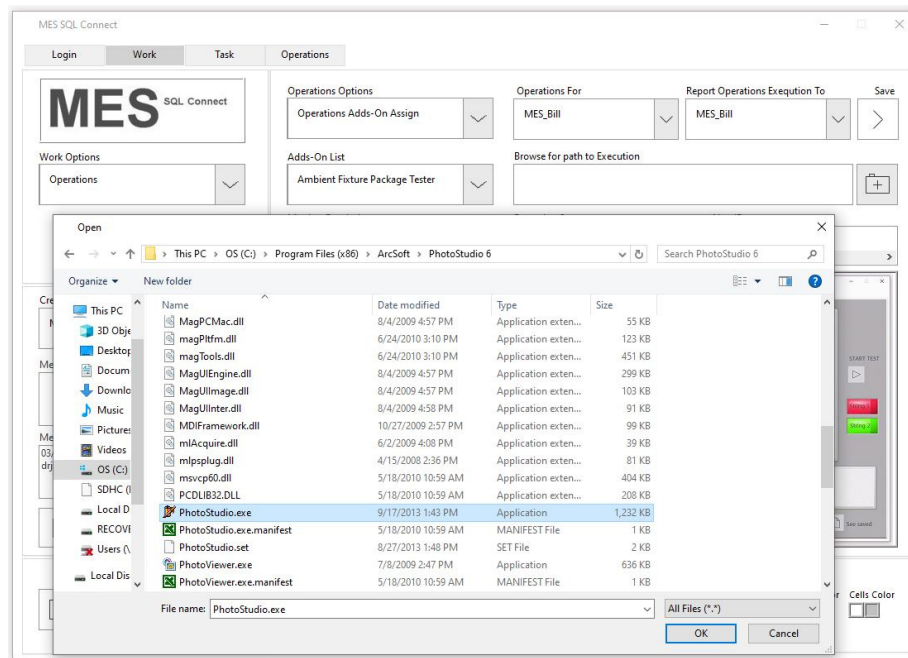
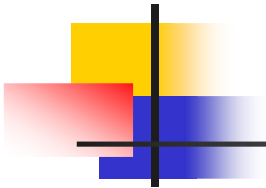
“Operations Adds-On Assign” function is used for assigning and clarification the Adds-On to particular User “Operations For” with report to the particular User “Report Operations Executions To”.

Choose Adds-On in the “Adds-On List”.

“Ambient Fixture Package Tester” is chosen.

“Database Information and Image size” is showing the current condition of the Adds-On stored in the Database.

Continue...

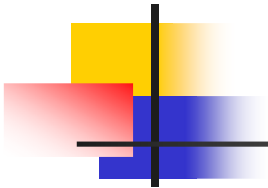


## Work: Working Options: Operations Operations Options: Operations Adds-On Assign

“Browse for path to Execution” startup application file.  
“PhotoStudio.exe” file is chosen.

OK

Continue...



MES SQL Connect

Login Work Task Operations

**MES** SQL Connect

Work Options  
Operations

Create Message to: MES\_Bill Send

Message Send

Message Received  
03/30/2020 23:18:29 from MES\_Bill: djsjdj

Operations Options  
Operations Adds-On Assign

Adds-On List  
Ambient Fixture Package Tester

Monitor Resolution  
2560 x 1440

Database Information and Image size

Column	Value
DocNumber	15
Assigned By	
Assigned To	
Report To	
Adds-On Name	Ambient Fixture Packag
Execution Startup	
Screen Resolution	
Pass To Executable	
Note ID	
Image Width	1111
Image Height	802
Image Depth	8
Date Time ID	05/13/2020 14:45:46
Accepted By	MES_Bill
Today's Day Time	05/13/2020 14:49:18
Will be Accepted By	MES_Bill

Operations For: MES\_Brian Report Operations Execution To: MES\_Alex Save

Browse for path to Execution  
C:\Program Files (x86)\ArcSoft\PhotoStudio 6\PhotoStudio.exe

Execution Startup  
PhotoStudio.exe

NoteID  
Graphical design of the Project #1238974-

MES SQL Connect

START TEST

Particle Measurements (Peak Particle Analysis)

Size	Intensity	Area	Volume
10.00	1.00	121.00	12.00
15.00	1.00	15.00	18.00
20.00	22.00	422.00	29.00
25.00	18.00	258.00	31.00
30.00	31.00	109.00	103.00

Refresh Table Search Table Column to Sort num Rows Columns Header Color Cells Color

0 Number 0 0 0

EXIT

## Work: Working Options: Operations Operations Options: Operations Adds-On Assign

“Execution Startup” field is forming automatically, based on the name of the startup file.

“NoteID” is a field for note.

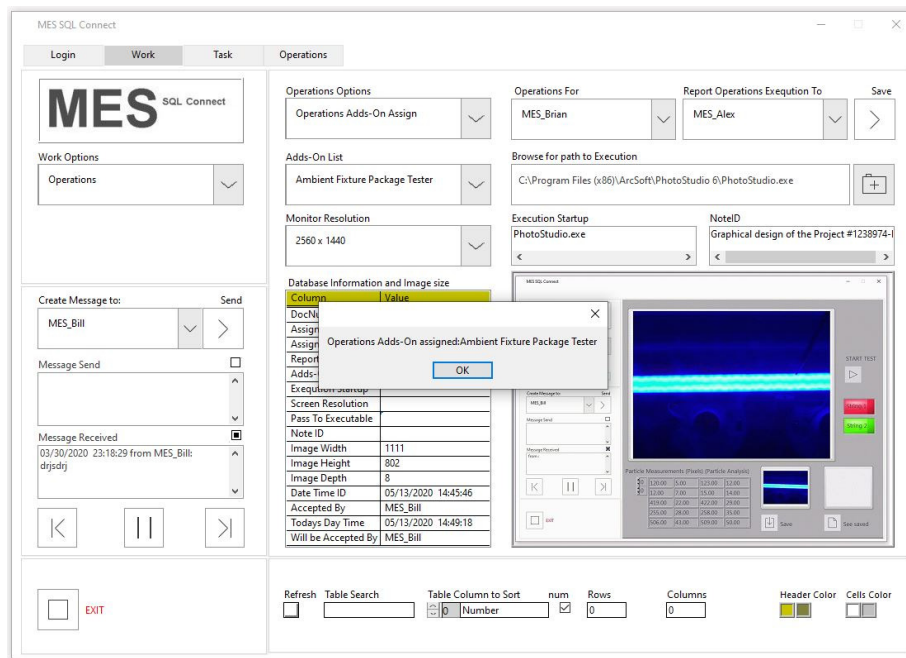
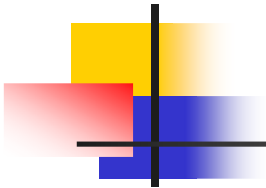
“Operations For”: MES\_Brian

“Report Operations Execution To”: MES\_Alex

“Monitor Resolution”: 2560 x 1440 (some applications require the special settings of the Monitor resolution).

“Save”.

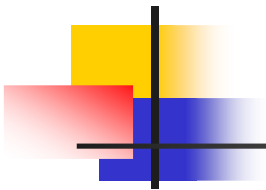
Continue...



Work: Working Options: Operations  
Operations Options: Operations Adds-On  
Assign

DIALOG: "Operations Adds-On assigned: Ambient Fixture  
Package Tester  
OK

Continue...



MES SQL Connect

Login Work Task Operations

**MES** SQL Connect

Work Options  
Operations

Create Message to: MES\_Bill Send

Message Send

Message Received  
03/30/2020 23:18:29 from MES\_Bill: djsdjd

Operations Options  
Operations Adds-On Assign

Adds-On List  
Ambient Fixture Package Tester

Monitor Resolution  
2560 x 1440

Database Information and Image size

Column	Value
DocNumber	15
Assigned By	MES_Bill
Assigned To	MES_Brian
Report To	MES_Alex
Adds-On Name	Ambient Fixture Packag
Execution Startup	PhotoStudio.exe
Screen Resolution	2560 x 1440
Pass To Executable	C:\Program Files (x86)\P
Note ID	Graphical design of the
Image Width	1111
Image Height	802
Image Depth	8
Date Time ID	05/13/2020 14:45:46
Accepted By	MES_Bill
Today's Day Time	05/13/2020 14:50:14
Will be Accepted By	MES_Bill

Operations For  
MES\_Brian

Report Operations Execution To  
MES\_Alex

Browse for path to Execution  
C:\Program Files (x86)\ArcSoft\PhotoStudio 6\PhotoStudio.exe

Execution Startup  
PhotoStudio.exe

NoteID  
Graphical design of the Project #1238974-I

MES SQL Connect

Light Received

Color Histogram

Message Send

Message Received

Particle Measurements (Particle Analysis)

Refresh Table Search Table Column to Sort num Rows Columns Header Color Cells Color

EXIT

## Work: Working Options: Operations Operations Options: Operations Adds-On Assign

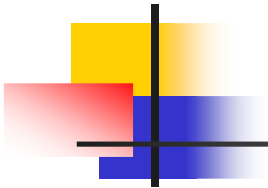
Operations Adds-On settings was set and assigned.

“Database Information and Image size” table is showing the actual data of the saved information.

Now, upon the User “MES\_Brian” goes to his Operations, this user will be assigned to use the application “PhotoStudio.exe”. This application will be automatically launched.

Any Adds-On application may use an Alarm Shared Variable to transfer data to the particular MES database. The details about Alarm Shared Variables see in “SysData”.

Continue...



MES SQL Connect

Login Work Task Operations

**MES** SQL Connect

Work Options  
Operations

Create Message to: MES\_Bill Send

Message Send

Message Received  
05/30/2020 23:18:29 from MES\_Bill:  
djsjdj

Operations Options  
Operations Adds-On Assign

Adds-On List  
Candela Chrome

Monitor Resolution  
1680 x 1050

Database Information and Image size

Column	Value
DocNumber	5
Assigned By	MES_Bill
Assigned To	MES_John
Report To	MES_Sidney
Adds-On Name	Candela Chrome
Execution Startup	AVG-Secure-Search-Upc
Screen Resolution	1680 x 1050
Pass To Executable	E:\Program Files (x86)\A
Note ID	AVG-Secure-Search
Image Width	1111
Image Height	802
Image Depth	8
Date Time ID	05/09/2020 02:36:20
Accepted By	MES_Bill
Today's Day Time	05/13/2020 14:50:52
Will be Accepted By	MES_Bill

Operations For  
MES\_Brian

Report Operations Execution To  
MES\_Alex

Save

Browse for path to Execution  
C:\Program Files (x86)\ArcSoft\PhotoStudio 6\PhotoStudio.exe

Execution Startup  
PhotoStudio.exe

NoteID  
Graphical design of the Project #1238974-

MES SQL Connect

MES SQL Connect

Progress

Ref: Table Search Table Column to Sort num Rows Columns Header Color Cells Color

EXIT

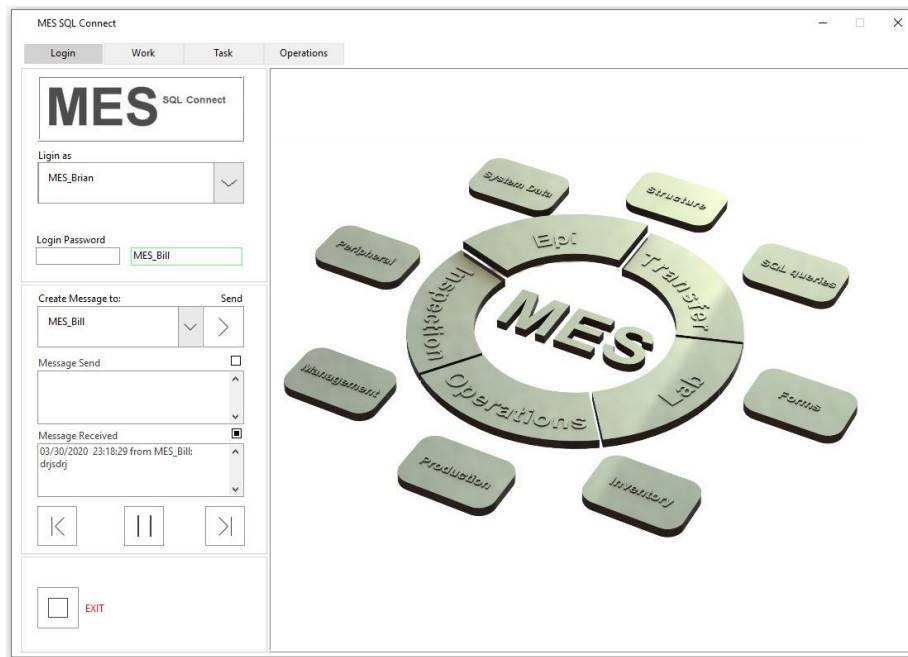
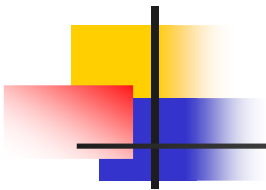
## Work: Working Options: Operations Operations Options: Operations Adds-On Assign

The sample of the assigned Adds-On application in the instructed Database.

“Adds-On List”: “Candela Chrome” Adds-on assigned by “MES\_Bill” to “MES\_John” with report to “MES\_Sidney”.

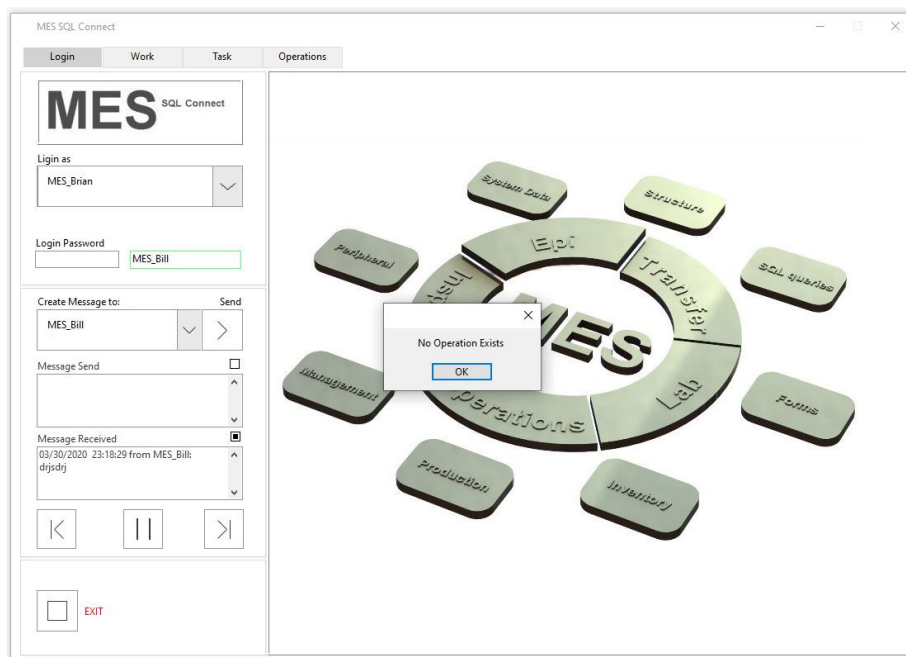
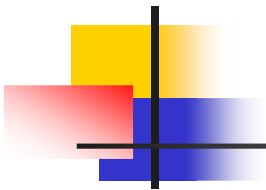
Continue...





Login: Mes\_Brian

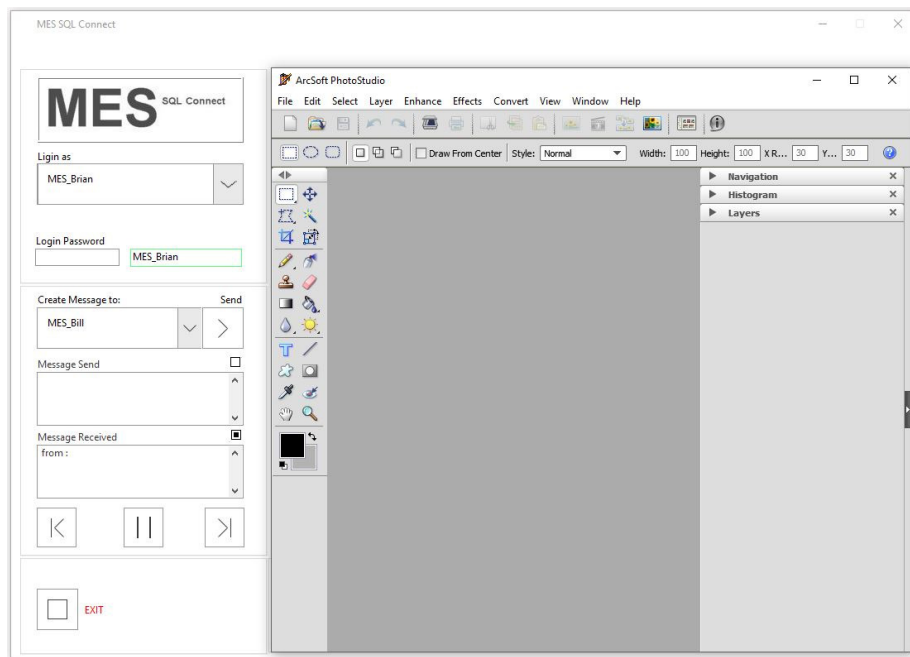
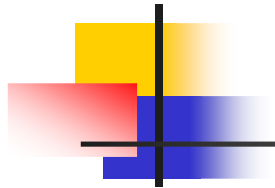
Continue...



Login: Mes\_Brian

DIALOG" No Operation Exists.

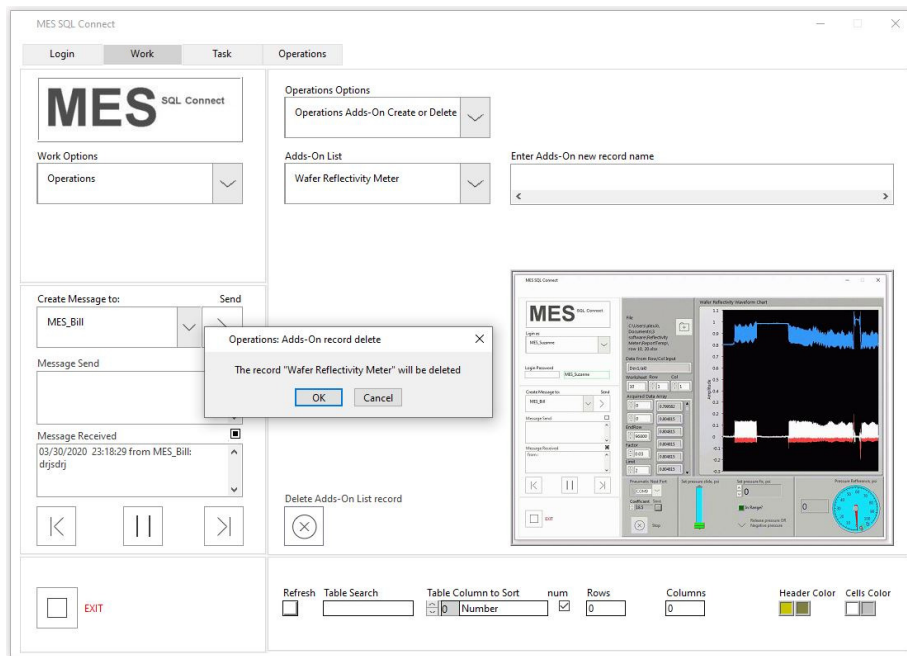
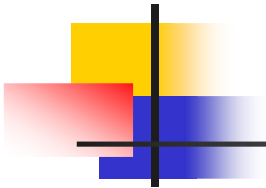
Continue...



Login: Mes\_Brian

PhotoStudio application launched, as assigned by earlier setup.

Continue...



## Work: Working Options: Operations Operations Options: Operations Adds-On Create or Delete

To delete any of the Adds-On from the database records:  
 “Adds-On List”: “Wafer Reflectivity Meter” adds-on ready to be deleted. All records connected with this application name will be erased from the database.  
 DIALOG: Operations: Adds-On record delete. The record “Wafer Reflectivity Meter” will be deleted.  
 OPTIONS: “OK”; “Cancel”.